



POLICON
Engineering & Manufacturing

***Cone ice cream
pick up machine***

Cone ice cream pick up machine

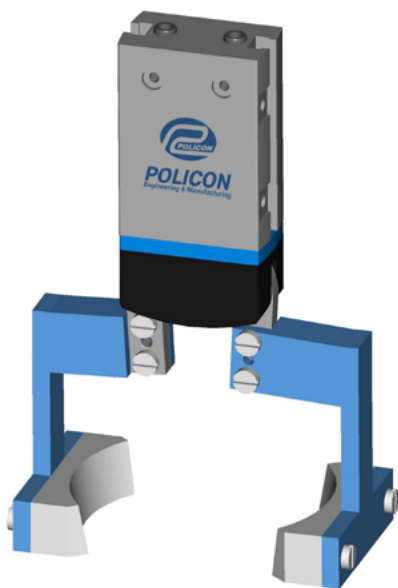


Pneumatic Cone ice cream pick up machine is installed in the ice cream transfer lines and is designed to pick up, hold and release the ice cream in the right place.

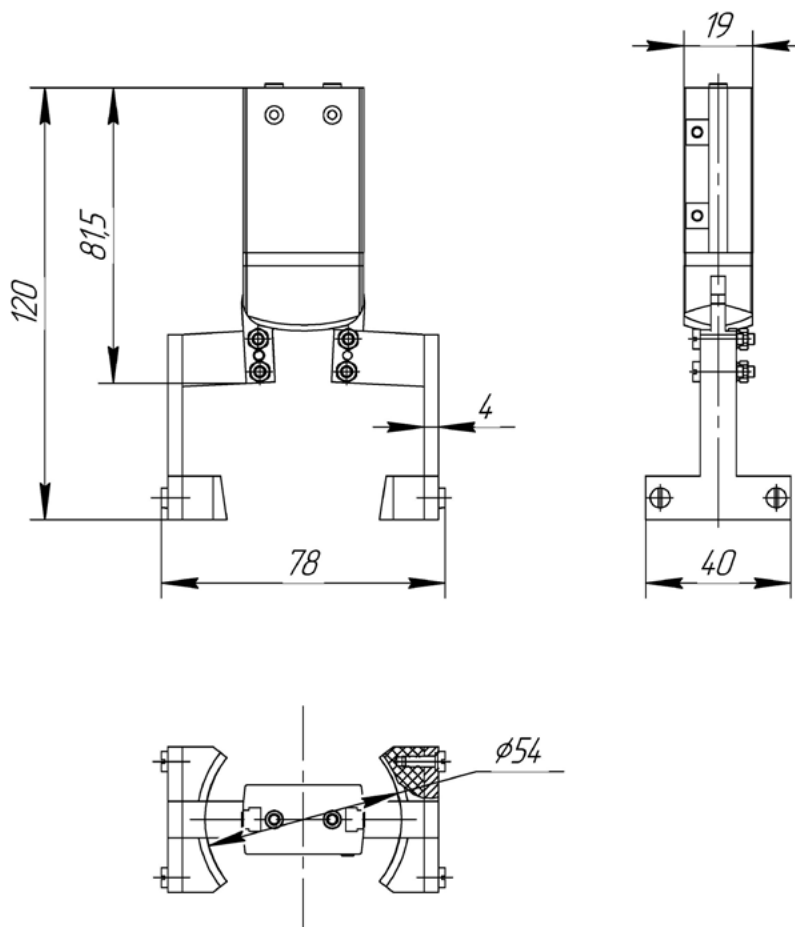
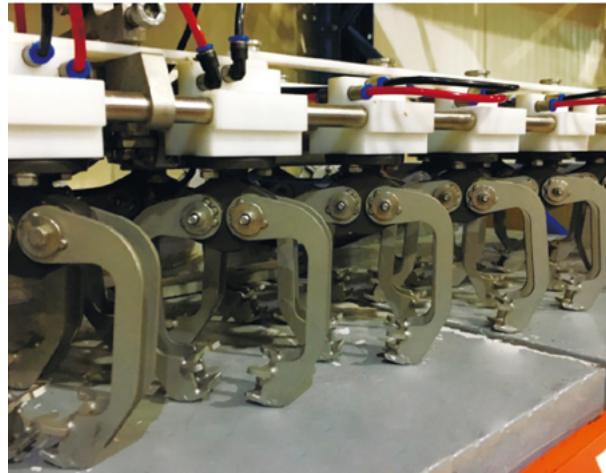
Application area-food production.

Case material-aluminum.

Sponge material-stainless steel, steel, silicone.



Cone ice cream pick up machine



Cone ice cream pick up machine



Technical Specification:

Opening angle, degree	40
Working pressure, bar	6 - 8
Min opening time at 6 bar, msec	44
Min closing time at 6 bar, msec	52
Mass moment of inertia, kg / cm ²	0,14
Overall dimensions:	
height, mm	120
length, mm	78
width, mm	40
Weight, kg, not more than	0,2

This product can be manufactured according to the technical specifications of the customer, taking into account its predetermined parameters and features.

Food Machinery

Machinery for tires, rubber, plastics manufacturing

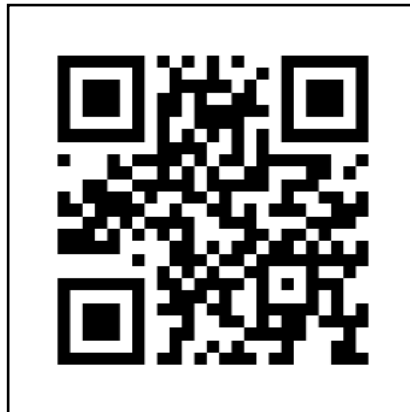
Modernization and automation of production

Non-standart equipment

Production of spare parts, components, assemblies

**Outsourcing services - repair and maintenance of
equipment**

Global engineering solutions



Policon JSCo

194 Lermontov Str, Omsk 644009, Russia

Tel./Fax: +7 (3812) 36 74 12, 36 74 02, 48 48 30

e-mail: info@policon-rt.ru

www.policon-rt.ru